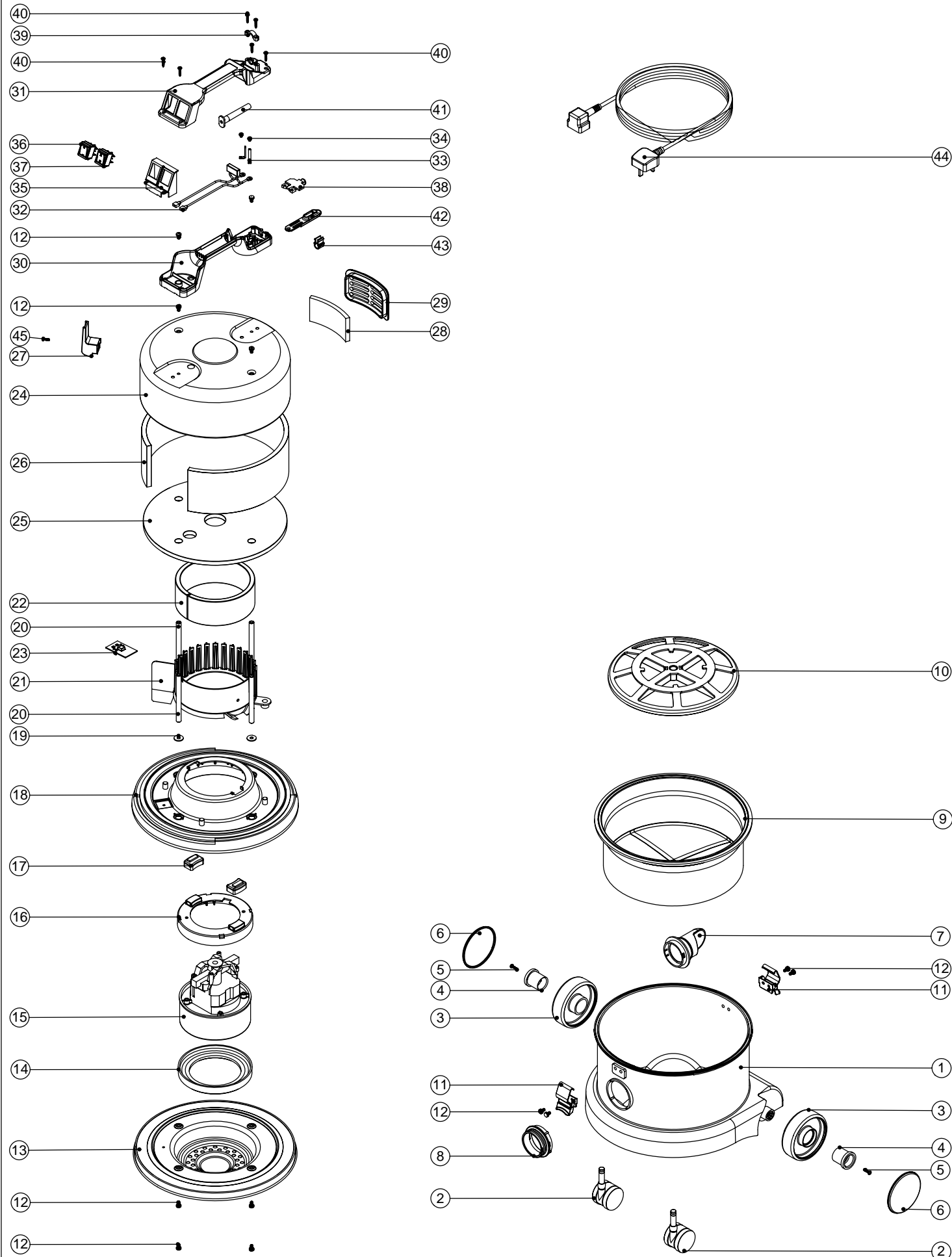


Numatic International Spare Parts

Model No: NVQ200-22 / NVQ370-22 (2 WIRE)

234318
DRAWING: EXP-0749 ISS:A03
11/01/2006



Numatic International Spare Parts

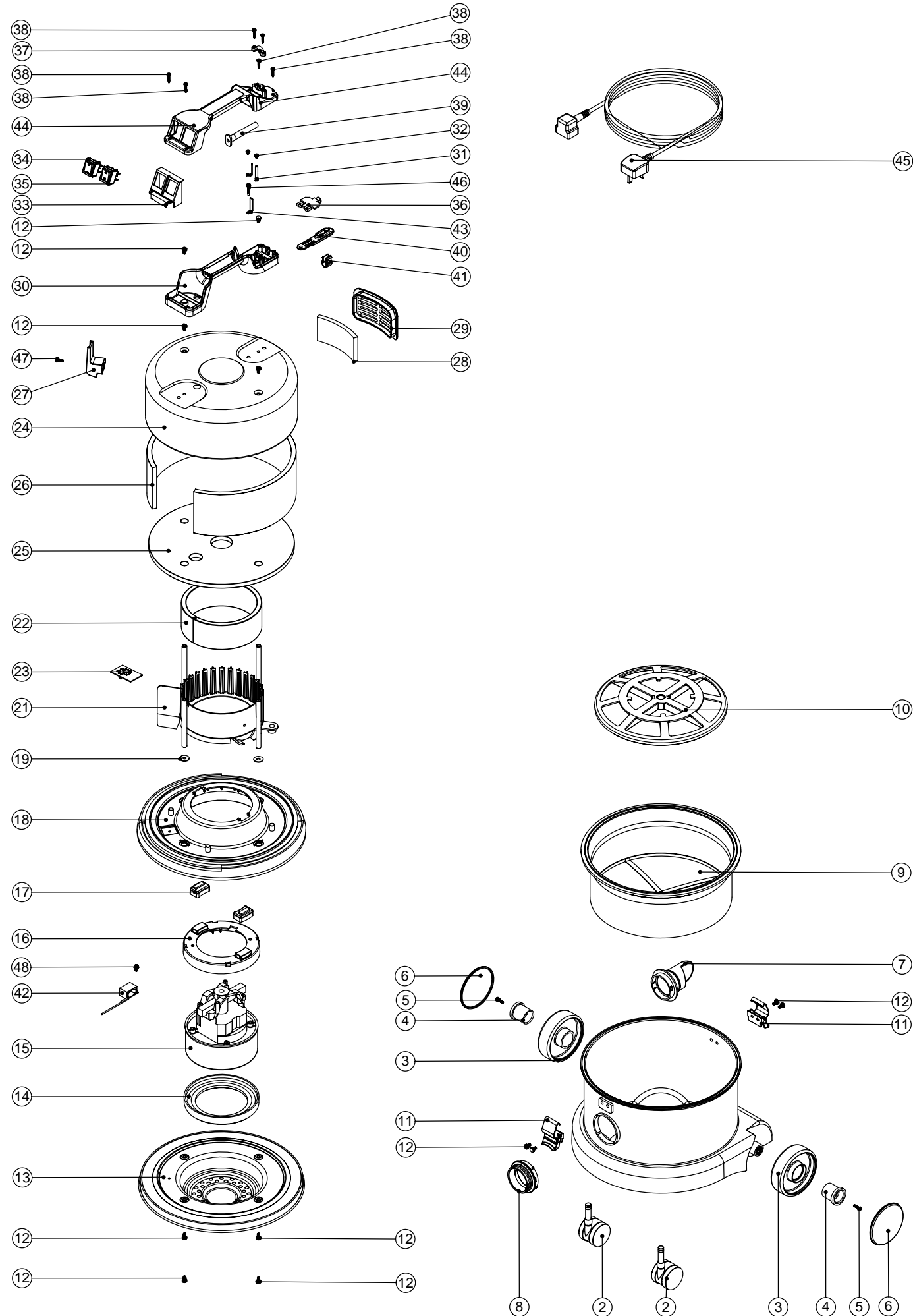
Model No: NVQ200-22 / NVQ370-22 (2 WIRE)

POS:	ITEM NO:	DESCRIPTION:	COMMENTS:
1	300235	RED CONTAINER (NO FACE)	USE FOR NVQ200
	300236	BLUE CONTAINER (NO FACE)	USE FOR NVQ200
	300237	GREEN CONTAINER (NO FACE)	USE FOR NVQ200
	300234	GREY CONTAINER (NO FACE)	USE FOR NVQ200
	300238	GREY CONTAINER (NO FACE)	USE FOR NVQ200
	325520	PROCESSED RED DRUM + INSERTS	USE FOR NVQ370
	325521	PROCESSED BLUE DRUM + INSERTS	USE FOR NVQ370
	325522	PROCESSED GREEN DRUM + INSERTS	USE FOR NVQ370
	325559	PROCESSED GREY DRUM + INSERTS	USE FOR NVQ370
	325523	PROCESSED YELLOW DRUM + INSERTS	USE FOR NVQ370
	250028	FUN FACE	
2	204111	50MM TWIN WHEEL CASTOR WITH PU TYRE	
3	227640	2 SHOT WHEEL ASSEMBLY	
4	227868	WHEEL HUB FOR 2 SHOT WHEEL	
5	219105	No8 X 5/8 INCH LONG POZI PAN PLASTITE SCREW	
6	227638	PLAIN BLACK TRIM	
7	227363	BAG CONNECTOR	
8	227396	RED THREADED NECK	
	227397	BLUE THREADED NECK	
	227398	GREEN THREADED NECK	
	227399	YELLOW THREADED NECK	
	227346	GREY THREADED NECK	
9	207109	12 INCH FILTER (DOUBLE BOTTOM) 160GRM SMS	
10	209050	SINGLE FILTER GRID	
11	206038	TOGGLE	
12	219047	M5 X 10MM LONG POZI PAN SEMS SCREW	
13	401348	BLACK BOTTOM MOTOR HOUSING	
14	227882	BOTTOM MOTOR GASKET	
15	205403	240V 2 STAGE THRO FLOW TAPER FAN MOTOR (DL21104T) TCO	
	205402	220V 2 STAGE THRO FLOW TAPER FAN MOTOR (DL21102T) TCO	
16	227886	MOTOR SPACER (LAMB DAF MOTOR)	
17	227885	MOUNTING RUBBER	
18	225136	NVQ TOP MOTOR HOUSING (PLASTIC) LAMB MOTOR	
19	219876	1/4 X 3/4 X 16G PLAIN WASHER TABLE 5 ZINC PLATED	
20	208003	115MM LONG ALUMINIUM SPACER	
21	227883	NOISE REDUCTION POD	
22	203020	POD SIDE FELT	
23	206609	NUMATIC 2 SPEED CONTROL PCB (240V) BLUE BOARD 220MB	
	206607	NUMATIC 2 SPEED CONTROL PCB (220V) BLACK BOARD	
24	401194	BLACK HEAD TOP	
25	203005	TOP FELT	
26	203009	SIDE FELT INSULATION	
27	206006	CABLE REELING HOOK	
28	206260	AIR DIFFUSER PAD	
29	225064	OUTLET GRILL	
30	320686	HANDLE BASE MOULDING	
31	227624	HANDLE COVER	
32	220142	SUPPRESSOR ASSEMBLY	
33	206562	CONTACT PIN	
34	219090	M4 X 8MM LONG POZI PAN SEMS SCREW	
35	227629	SWITCH MOUNTING BRACKET	
36	220552	RED ROCKER SWITCH	
37	220243	BLACK/GREEN ROCKER SWITCH	
38	227632	TERMINAL COVER & CLAMP	
39	227564	PLUG LOCATION CLAMP	
40	219107	No6 X 5/8 INCH LONG POZI PAN PLASTITE SCREW	
41	220923	STRESS RELIEF	
42	227636	STRAIN RELIEF	
43	227637	CABLE CLIP	
44	236009	10.0M X 1.00MM X 2 CORE NUCABLE (UK PLUG)	
	236013	10.0M X 1.00MM X 2 CORE NUCABLE (EURO PLUG)	
	236017	10.0M X 1.00MM X 2 CORE NUCABLE (SWISS PLUG)	
	236021	10.0M X 1.00MM X 2 CORE NUCABLE (SOUTH AFRICAN PLUG)	
	236029	10.0M X 1.00MM X 2 CORE NUCABLE (AUSTRALIAN PLUG)	
45	221151	M4 X 12MM LONG POZI PAN SCREW	

Numatic International Spare Parts

Model No: NVQ200-22 / NVQ370-22 EXPLODED DRAWING (3 WIRE)

234325
DRAWING: EXP-0756 ISS:A03
11/01/2006



Numatic International Spare Parts

Model No: NVQ200-22 / NVQ370-22 EXPLODED DRAWING (3 WIRE)

POS:	ITEM NO:	DESCRIPTION:	COMMENTS:
1	300235	RED CONTAINER (NO FACE)	USE FOR NVQ200-22
	300236	BLUE CONTAINER (NO FACE)	USE FOR NVQ200-22
	300237	GREEN CONTAINER (NO FACE)	USE FOR NVQ200-22
	300234	GREY CONTAINER (NO FACE)	USE FOR NVQ200-22
	300238	YELLOW CONTAINER (NO FACE)	USE FOR NVQ200-22
	325520	PROCESSED RED DRUM + INSERTS	USE FOR NVQ370-22
	325521	PROCESSED BLUE DRUM + INSERTS	USE FOR NVQ370-22
	325522	PROCESSED GREEN DRUM + INSERTS	USE FOR NVQ370-22
	325559	PROCESSED GREY DRUM + INSERTS	USE FOR NVQ370-22
	325523	PROCESSED YELLOW DRUM + INSERTS	USE FOR NVQ370-22
2	204111	50MM TWIN WHEEL CASTOR WITH PU TYRE	
3	227640	2 SHOT WHEEL ASSEMBLY	
4	227868	WHEEL HUB FOR 2 SHOT WHEEL	
5	219105	No8 X 5/8 INCH LONG POZI PAN PLASTITE SCREW	
6	227638	PLAIN TRIM (BLACK)	
7	227363	BAG CONNECTOR	
8	227396	RED THREADED NECK	
	227397	BLUE THREADED NECK	
	227398	GREEN THREADED NECK	
	227399	YELLOW THREADED NECK	
	227346	GREY THREADED NECK	
9	207109	12 INCH FILTER (DOUBLE BOTTOM) 160GRM SMS	
10	209050	SINGLE FILTER GRID	
11	206038	TOGGLE	
12	219047	M5 X 10MM LONG POZI PAN SEMS SCREW	
13	401348	BLACK BOTTOM MOTOR HOUSING	
14	227882	BOTTOM MOTOR GASKET	
15	205403	240V 2 STAGE THRO FLOW TAPER FAN MOTOR (DL21104T) TCO	
	205402	220V 2 STAGE THRO FLOW TAPER FAN MOTOR (DL21102T) TCO	
16	227886	MOTOR SPACER (LAMB DAF MOTOR)	
17	227885	MOUNTING RUBBER	
18	225136	NVQ TOP MOTOR HOUSING (PLASTIC) LAMB MOTOR	
19	219876	1/4 X 3/4 X 16G PLAIN WASHER TABLE 5 ZINC PLATED	
20	208003	115MM LONG ALUMINIUM SPACER	
21	227883	NOISE REDUCTION POD	
22	203020	POD SIDE FELT	
23	206609	NUMATIC 2 SPEED CONTROL PCB (240V) BLUE BOARD 220MB	
	206607	NUMATIC 2 SPEED CONTROL PCB (220V) BLACK BOARD	
24	401194	BLACK HEAD TOP	
25	203005	TOP FELT	
26	203009	SIDE FELT INSULATION	
27	206006	CABLE REELING HOOK	
28	206260	AIR DIFFUSER PAD	
29	225064	OUTLET GRILL	
30	320686	HANDLE BASE MOULDING	
31	206562	CONTACT PIN	
32	219090	M4 X 8MM LONG POZI PAN SEMS SCREW	
33	227629	SWITCH MOUNTING BRACKET	
34	220552	RED ROCKER SWITCH	
35	220243	BLACK/GREEN ROCKER SWITCH	
36	227631	TERMINAL COVER & CLAMP (3 PIN)	
37	227564	PLUG LOCATION CLAMP	
38	219107	No6 X 5/8 INCH LONG POZI PAN PLASTITE SCREW	
39	220923	STRESS RELIEF	
40	227636	STRAIN RELIEF	
41	227637	CABLE CLIP	
42	230074	DELTA SUPPRESSOR (LAMB MOTOR)	
43	206563	EARTH CONTACT PIN	
44	227622	HANDLE COVER 10AMP 3PIN 2 SWITCH	
45	236010	10.0M X 1.00MM X 3 CORE NUCABLE (UK PLUG)	
	236014	10.0M X 1.00MM X 3 CORE NUCABLE (EURO PLUG)	
	236018	10.0M X 1.00MM X 3 CORE NUCABLE (SWISS PLUG)	
	236022	10.0M X 1.00MM X 3 CORE NUCABLE (SOUTH AFRICAN PLUG)	
	236030	10.0M X 1.00MM X 3 CORE NUCABLE (AUSTRALIAN PLUG)	
46	219274	M4 X 20MM LONG POZI PAN SCREW	
47	221151	M4 X 12MM LONG POZI PAN SCREW	
48	219858	M5 x 8MM HEX WASHER FACED TAPFIX (DIN7500D)	