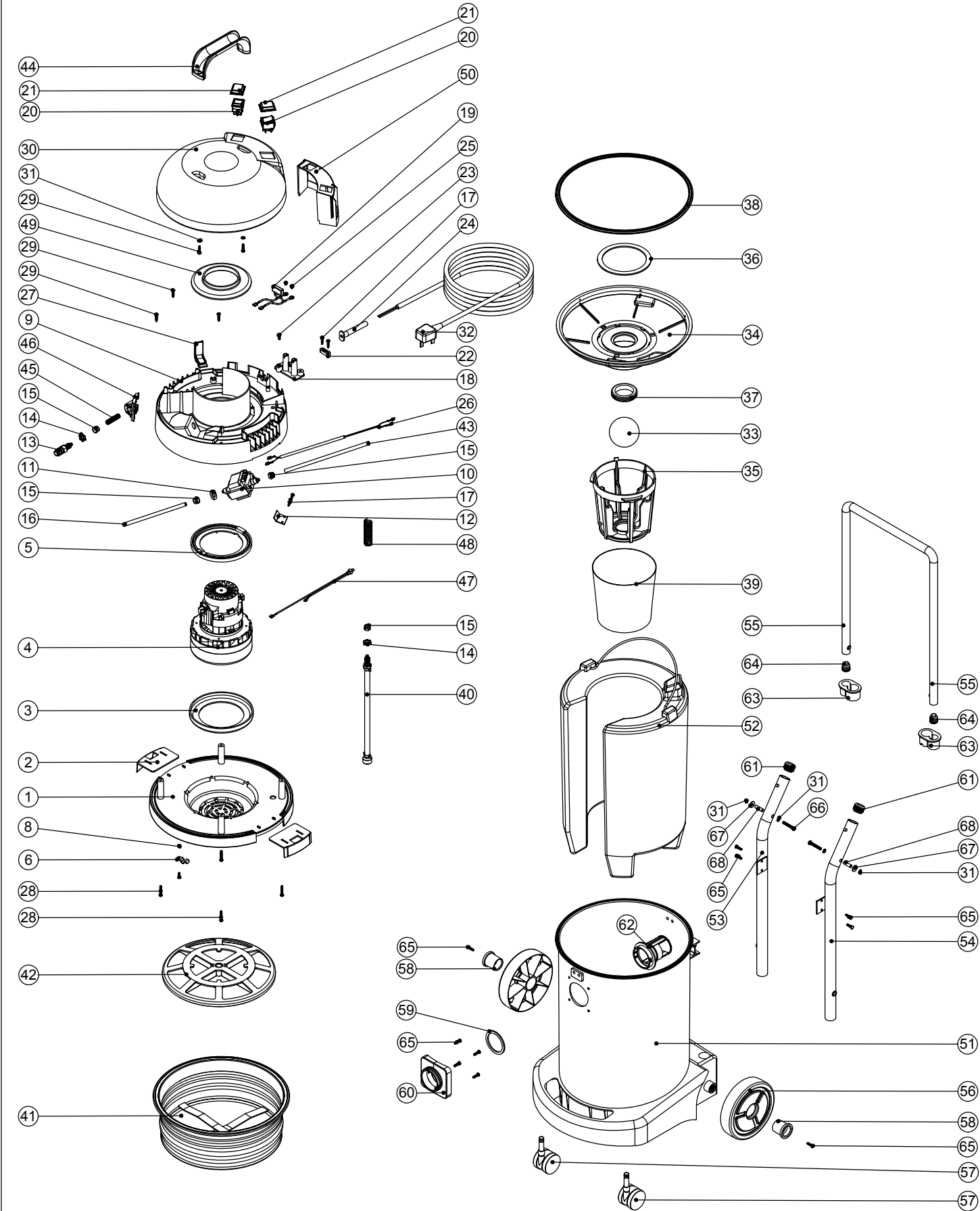


Numatic International Spare Parts

Model No: CT470-2 EXPLODED DRAWING

234358
DRAWING: EXP-0789 ISS:A01
31/05/2005



Numatic International Spare Parts

Model No: CT470-2 EXPLODED DRAWING

POS:	ITEM NO:	DESCRIPTION:	COMMENTS:
1	227922	BOTTOM MOTOR HOUSING	
2	227115	TOGGLE	
3	202031	BOTTOM MOTOR GASKET	
4	205411	240V 2 STAGE D.I BYPASS ACUSTEK MOTOR (BL21104)(MARKED 230V)	
	205410	220V 2 STAGE D.I BYPASS ACUSTEK MOTOR (BL21102) (MARKED 230V)	EURO VERSION
	205409	120V 2 STAGE D.I BYPASS ACUSTEK MOTOR (BL21101)	
5	227925	TOP MOTOR GASKET	
6	227230	WIRE CLIP	
7	221151	M4 X 12MM LONG POZI PAN SCREW	
8	219083	M4 NYLON INSERT NUT	
9	325506	PROCESSED TOP MOTOR HOUSING PRINTED GREY NUMATIC (LAMB MOTOR)	
10	216147	PUMP SMALL BORE 220/240V/50HZ	
11	206208	SEALING WASHER	
12	303022	PUMP FIXING BRACKET	
13	216296	QUICK RELEASE BULK HEAD FITTING	
14	219337	LOCKNUT	
15	219299	BLOCKING NUT	
16	227996	175MM LONG SOLUTION TUBE	
17	219107	No6 X 5/8 INCH LONG POZI PAN PLASTITE SCREW	
18	220564	TERMINAL BLOCK MOULDING (2 INSERTS)	
19	220698	SUPPRESSOR ASSEMBLY	
20	220843	BLUE ROCKER SWITCH	
21	206573	SWITCH COVER (PLUG HANDLE)	
22	227008	BLACK CABLE CLAMP	
23	219101	No8 X 1/2 INCH LONG POZI PAN PLASTITE SCREW	
24	220923	STRESS RELIEF	
25	219090	M4 X 8MM LONG POZI PAN SEMS SCREW	
26	321666	DIODE ASSEMBLY	
27	227019	CABLE HOOK	
28	219369	No8 X 1 INCH LONG POZI PAN STAINLESS STEEL PLASTITE SCREW	
29	219041	No8 X 3/4 INCH LONG POZI PAN SCREW	
30	227920	SWITCH COVER TOP	
31	219003	M5 FORM A STEEL WASHER	
32	236033	10.0M X 1.00MM X 2 CORE CABLE (UK PLUG)	
	236034	10.0M X 1.00MM X 2 CORE CABLE (EURO PLUG)	
	236047	10.0M X 1.00MM X 2 CORE CABLE (SWISS PLUG)	
	236036	10.0M X 1.00MM X 2 CORE CABLE (SOUTH AFRICAN PLUG)	
	236044	10.0M X 1.00MM X 2 CORE CABLE (AUSTRALIAN PLUG)	
	236049	10.0M X 1.50MM X 2 CORE CABLE (INDUSTRIAL PLUG)	
33	206026	POLYPROP BALL	
34	225087	FLOAT CAGE SUPPORT	
35	225086	FLOAT CAGE	
36	225083	FLOAT ASSEMBLY GASKET	
37	220235	FLOAT GROMMET	
38	207011	FLOAT CAGE GASKET	
39	207055	GAUZE FILTER	
40	303618	BRAIDED SOLUTION TUBE & FILTER ASSEMBLY	
41	207102	WHITE FILTER ASSEMBLY	
42	209050	SINGLE FILTER GRID	
43	227995	235MM LONG SOLUTION TUBE	
44	206451	HANDLE	
45	219281	TUBE SPRING	
46	270167	QUICK RELEASE MOUNTING BRACKET	
47	230078	240/220V THERMAL OVERLOAD	
48	219327	80MM LG COMPRESSION SPRING	
49	227926	AIR SEPERATOR	
50	227927	SWITCH MOUNTING BRACKET	
51	325454	470 BLUE DRUM ASSEMBLY DRILLED FOR FLANGE NECK WITH BAYONET	
	325455	470 GREY DRUM ASSEMBLY DRILLED FOR FLANGE NECK WITH BAYONET	
	325456	470 GREEN DRUM ASSEMBLY DRILLED FOR FLANGE NECK WITH BAYONET	
52	329314	FLUID CONTAINER (PROCESSED)	
53	321000	NUTSERTED LEFT HAND HANDLE SUPPORT (PAINTED BLACK)	
54	321001	NUTSERTED RIGHT HAND HANDLE SUPPORT (PAINTED BLACK)	
55	321002	NUTSERTED PIVOT HANDLE (PAINTED BLACK)	
56	204071	150MM DIAMETER MOULDED WHEEL	
57	204111	50MM TWIN WHEEL CASTOR WITH PU TYRE	
58	227011	BLACK WHEEL HUB CAP	
59	202027	HOSE FLANGE GASKET	
60	270161	FLANGE NECK BAYONET	
61	20637V	25.4MM TUBE END STOP	
62	206493	WET DRY CONNECTOR	
63	206362	LOCKING RING	
64	20638V	CSP-302 BLACK TUBE END STOP	
65	219105	No8 X 5/8 INCH LONG POZI PAN PLASTITE SCREW	
66	220033	M5 X 35MM LONG POZI PAN SCREW	
67	219005	M5 FORM G WASHER	
68	219567	SPIROL SPACER	